

# AlaVar generated report

C:\CALLISTO-01\FITfiles\TotalLightCurve100.prn

File 'C:\CALLISTO-01\FITfiles\TotalLightCurve100.prn' created on 19.06.2020 20:14:24

Column # 1 was processed

Data length N = 41581 points.

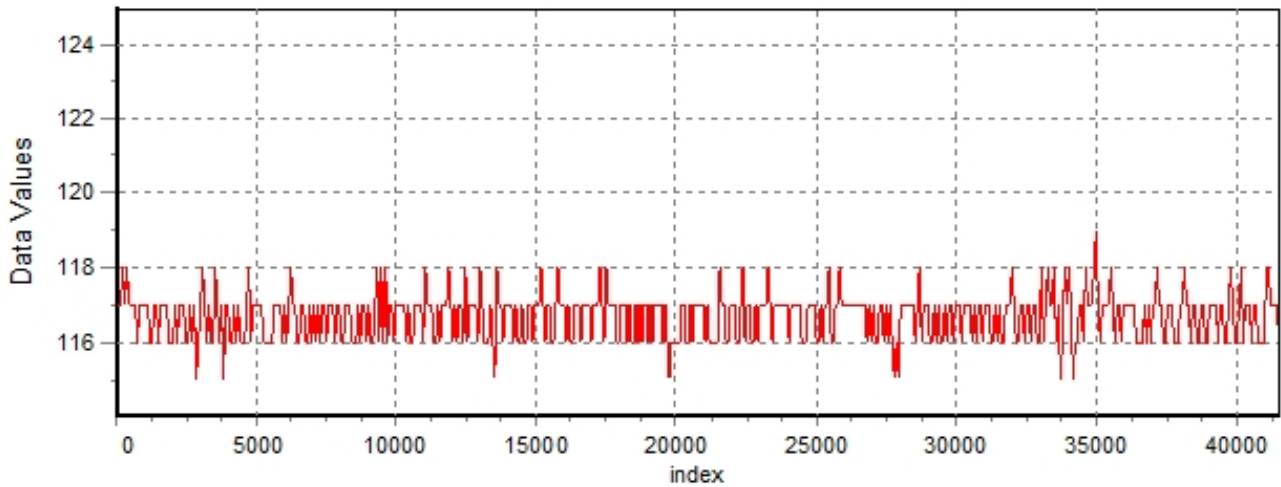
The mean Value of the processed data = 116.657

The Stanardr Deviation of the processed data = 2.83852

The number of removed outliers is 46

## AlaVar 5.2

### Data Values

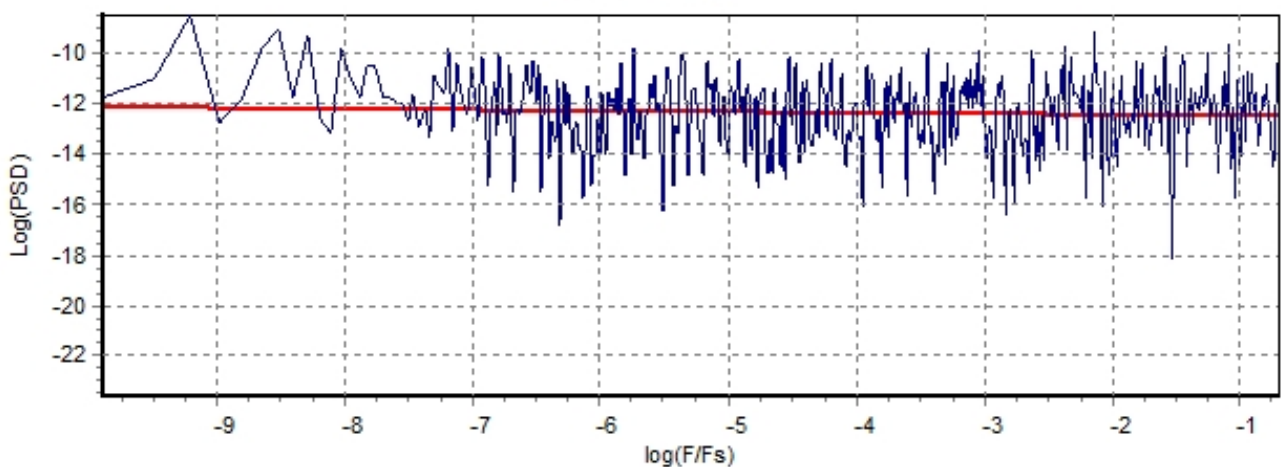


*Produced by AlaVar 5.2*

Figure 1 : Processed Data

## AlaVar 5.2

### PSD of Data



*Produced by AlaVar 5.2*

Figure 2 : Data PSD

The computation of the 3 ALLAN STD DEVS lasted 0.251000 seconds  
 The error bars were computed for a : White FM  
 The computation of the Error bars lasted 0 seconds

ADEV(tau) was fitted to a line :  
 The Solpe of the line is =-0.503797  
 The fit result is ADEV(tau=1) = Stability =0.316685

Tau = average Time  
 ADEV = Overlapping ALLAN STD DEV.  
 ADEV\_Min = ADEV lower bound.  
 ADEV\_Max = ADEV upper bound.  
 MDEV = Modified ALLAN STD DEV.  
 TDEV = Time ALLAN STD DEV.  
 HDEV = Overlapping HADAMARD STD DEV.

Tau	ADEV	ADEV_Min	ADEV_Max	MDEV	TDEV	HDEV
0.25	0.63701	0.63432	0.63974	0.63701	0.091945	0.63747
0.5	0.44925	0.4472	0.45133	0.35461	0.10237	0.45016
1	0.31603	0.31419	0.31791	0.23062	0.13315	0.31574
2	0.22555	0.22374	0.2274	0.1615	0.18649	0.22531
4	0.1594	0.15762	0.16125	0.11256	0.25995	0.16009
8	0.11047	0.10873	0.11228	0.077331	0.35718	0.1112
16	0.077118	0.075425	0.07893	0.054871	0.50688	0.077251
32	0.05291	0.051288	0.054696	0.036761	0.67916	0.052205
64	0.040718	0.038984	0.042707	0.03004	1.11	0.039028
128	0.032982	0.031041	0.03534	0.024278	1.7942	0.032112
256	0.026238	0.024119	0.029036	0.020263	2.9949	0.023477
512	0.024716	0.021998	0.028776	0.01897	5.6075	0.024238
1024	0.020304	0.017286	0.025771	0.016466	9.7348	0.020272
2048	0.012326	0.0098589	0.0186	0.0042042	4.9711	0.011947

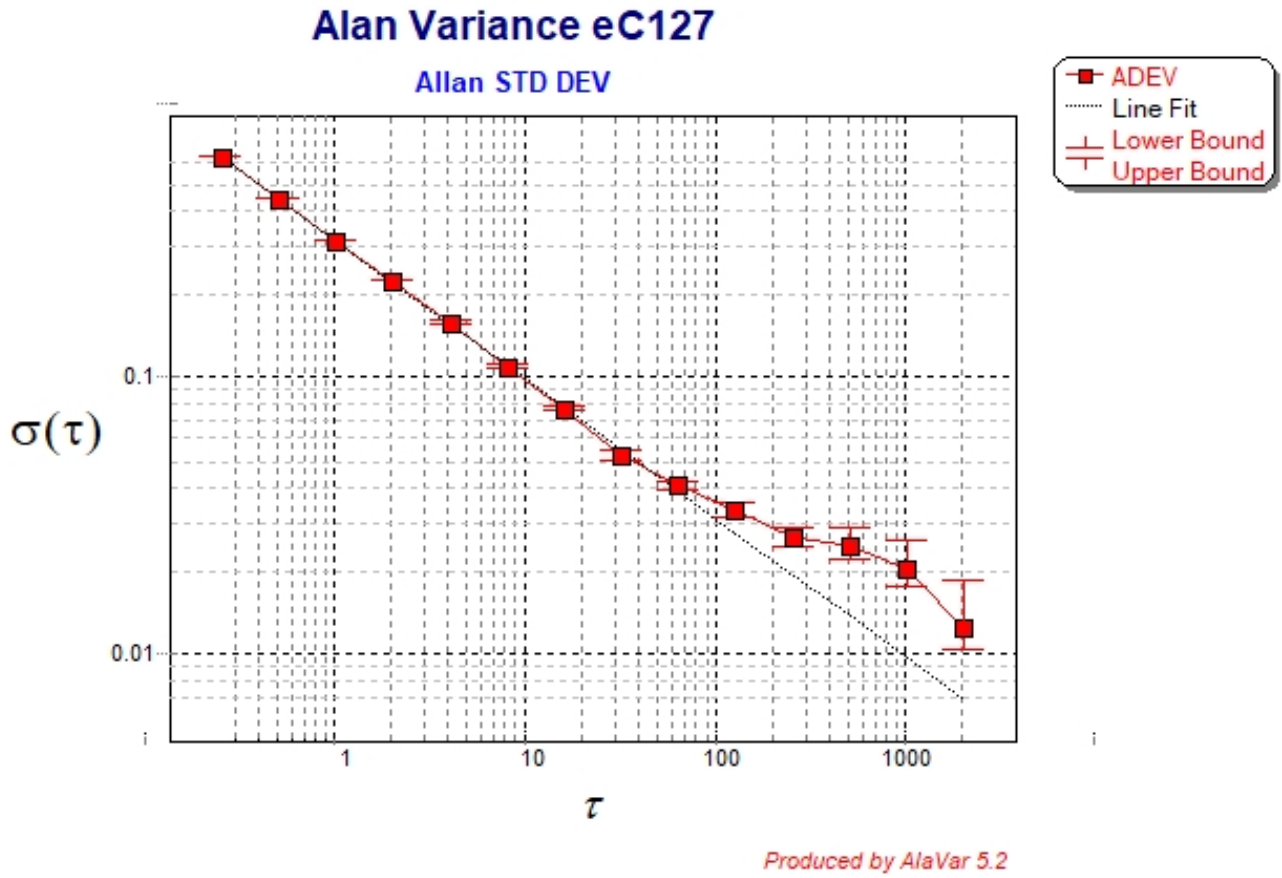


Figure 3 : Allan Standard Deviation