

# AlaVar generated report

C:\Users\STEG\Documents\Projects\Callisto-e-Callisto\QualiData\TotalLightCurveeC136.prn

File 'C:\Users\STEG\Documents\Projects\Callisto\e-Callisto\QualiData\TotalLightCurveeC136.prn' created on 09.06.2021 06:45:54

Column # 1 was processed

Data length N = 78049 points.

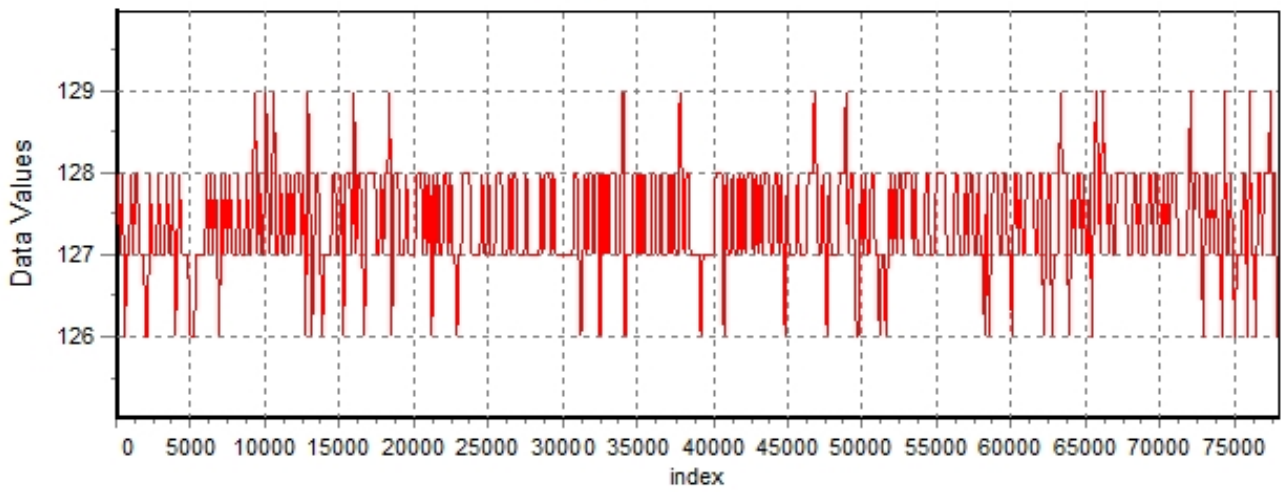
The mean Value of the processed data = 127.384

The Stanardr Deviation of the processed data = 3.04842

The number of removed outliers is 43

## AlaVar 5.2

### Data Values

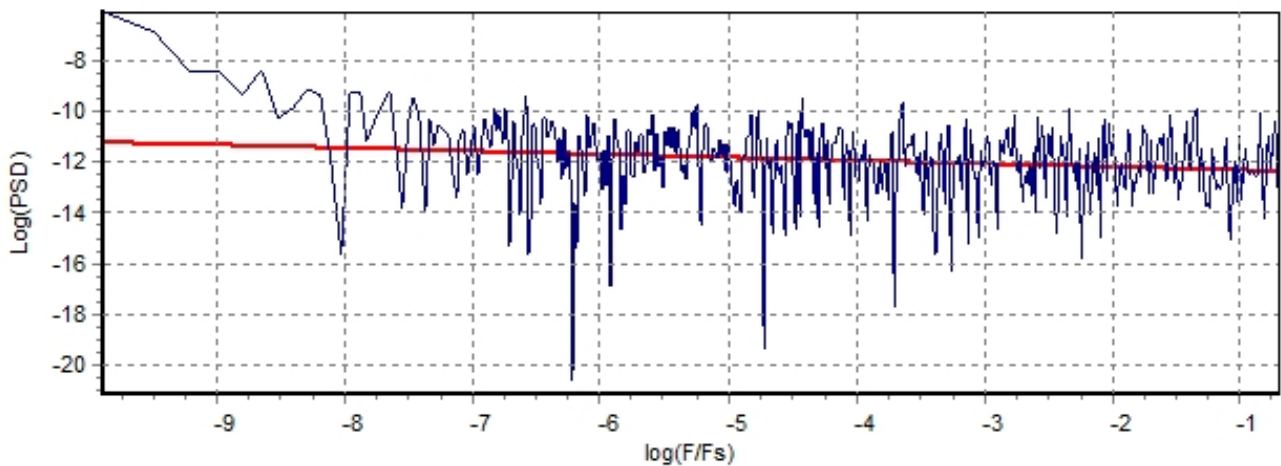


Produced by AlaVar 5.2

Figure 1 : Processed Data

## AlaVar 5.2

### PSD of Data



Produced by AlaVar 5.2

Figure 2 : Data PSD

The computation of the 3 ALLAN STD DEVs lasted 0.151000 seconds  
 The error bars were computed for a : White FM  
 The computation of the Error bars lasted 0 seconds

ADEV(tau) was fitted to a line :  
 The Solpe of the line is =-0.435932  
 The fit result is ADEV(tau=1) = Stability =0.317572

Tau = average Time  
 ADEV = Overlapping ALLAN STD DEV.  
 ADEV\_Min = ADEV lower bound.  
 ADEV\_Max = ADEV upper bound.  
 MDEV = Modified ALLAN STD DEV.  
 TDEV = Time ALLAN STD DEV.  
 HDEV = Overlapping HADAMARD STD DEV.

Tau	ADEV	ADEV_Min	ADEV_Max	MDEV	TDEV	HDEV
0.25	0.63556	0.6336	0.63754	0.63556	0.091735	0.63562
0.5	0.44853	0.44703	0.45004	0.35419	0.10225	0.44857
1	0.31746	0.31611	0.31884	0.23186	0.13386	0.31686
2	0.22669	0.22536	0.22804	0.16247	0.18761	0.22594
4	0.16249	0.16116	0.16386	0.11589	0.26763	0.16191
8	0.11771	0.11635	0.11911	0.084969	0.39246	0.11638
16	0.08803	0.086608	0.089525	0.064528	0.59609	0.086306
32	0.067673	0.066141	0.069315	0.049936	0.92259	0.066262
64	0.053304	0.05162	0.055163	0.040813	1.5081	0.050813
128	0.043873	0.041948	0.046089	0.032726	2.4185	0.042154
256	0.037884	0.035588	0.04069	0.030361	4.4874	0.034741
512	0.036684	0.033636	0.040745	0.030048	8.8823	0.031348
1024	0.039982	0.035462	0.046829	0.032314	19.104	0.020852
2048	0.047641	0.040364	0.061123	0.034308	40.566	0.032444
4096	0.051434	0.040858	0.07956	0.037384	88.408	0.040647

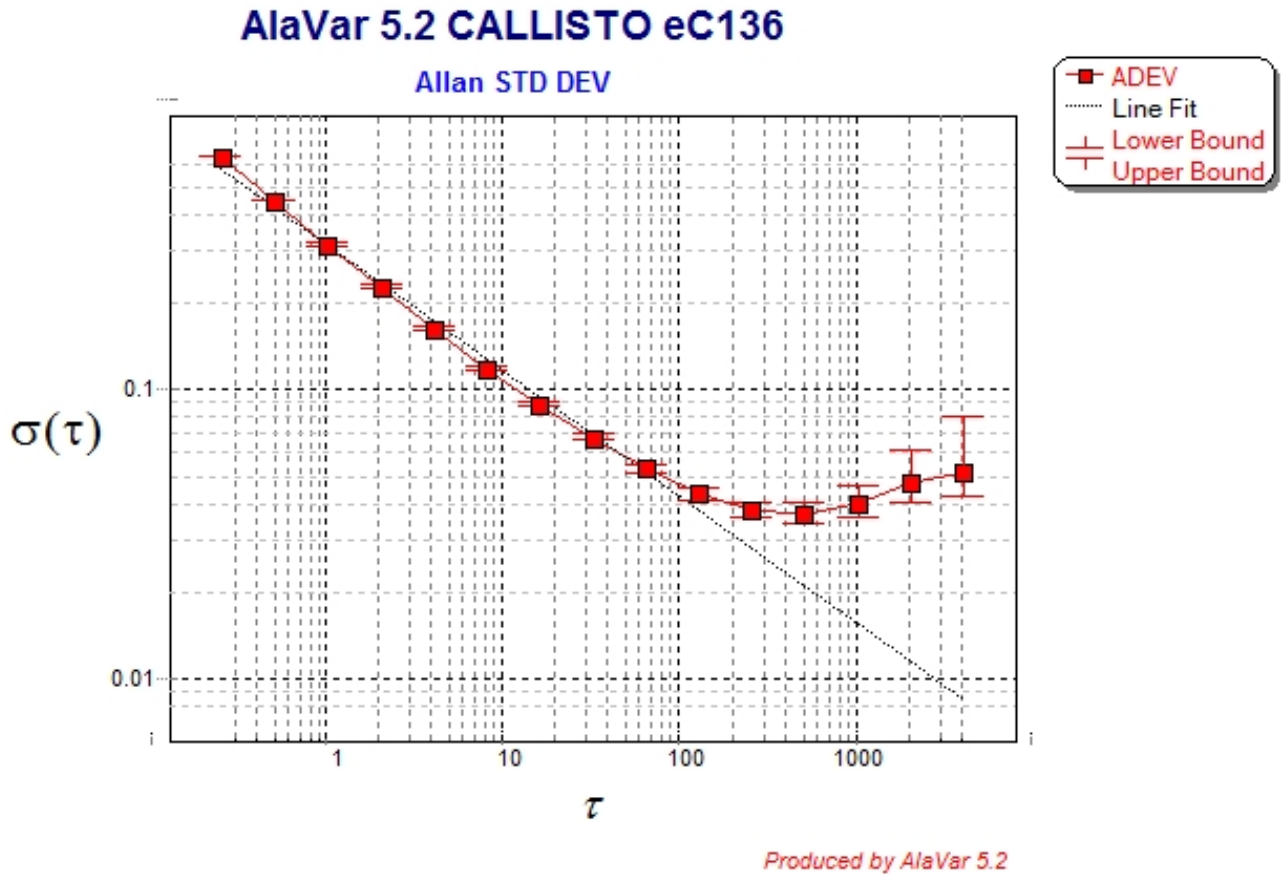


Figure 3 : Allan Standard Deviation