

AlaVar generated report

C:\temp\Data\LC100EC111.dat

File 'C:\temp\Data\LC100EC111.dat' created on 11.04.2018 06:50:48

Column # 1 was processed

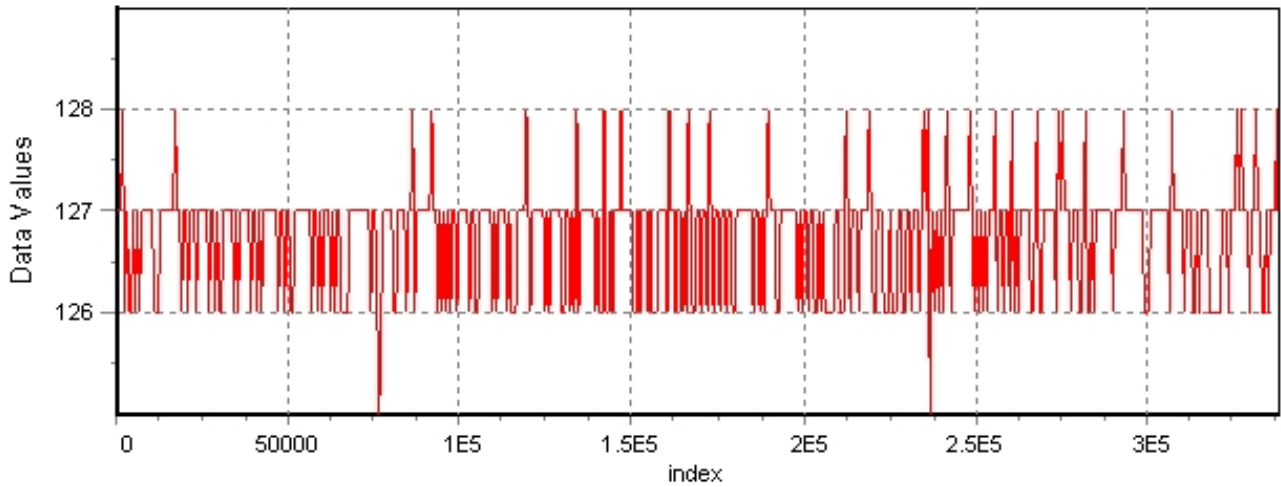
Data length N = 338391 points.

The mean Value of the processed data = 126.77

The Stanadr Deviation of the processed data = 0.566621

AlaVar 5.2

Data Values

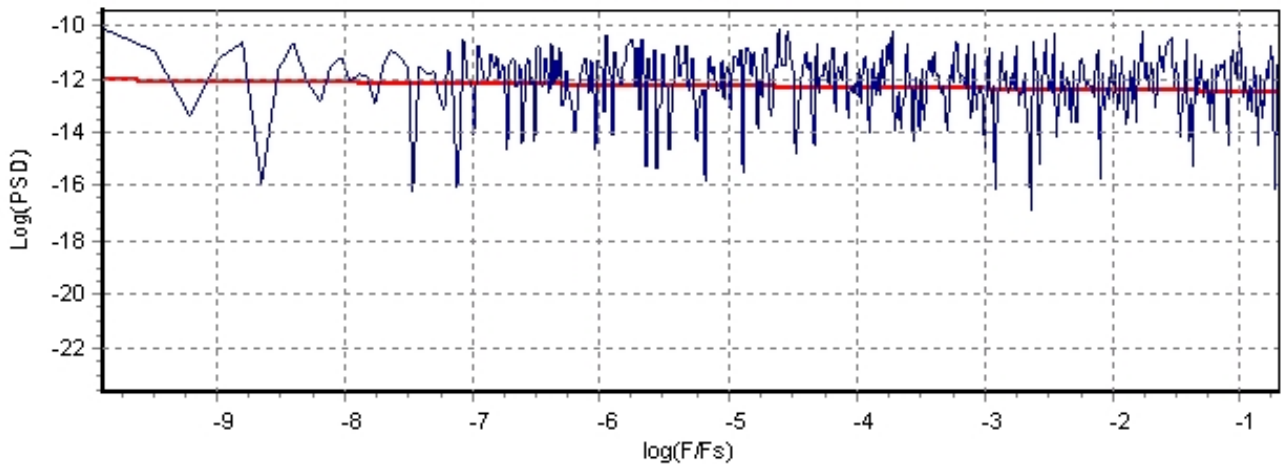


Produced by AlaVar 5.2

Figure 1 : Processed Data

AlaVar 5.2

PSD of Data



Produced by AlaVar 5.2

Figure 2 : Data PSD

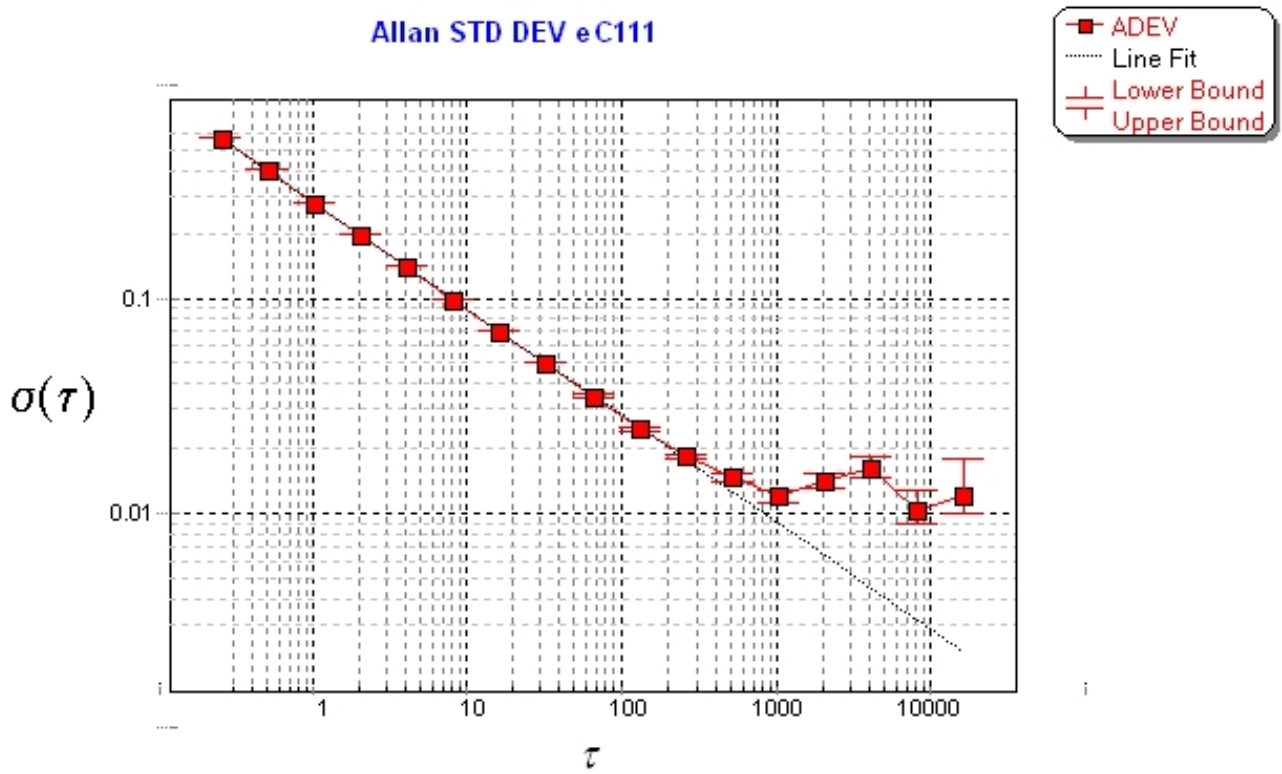
The computation of the 3 ALLAN STD DEVs lasted 0.532000 seconds
 The error bars were computed for a : White FM
 The computation of the Error bars lasted 0 seconds

ADEV(tau) was fitted to a line :
 The Solpe of the line is =-0.496875
 The fit result is ADEV(tau=1) = Stability =0.282221

Tau = average Time
 ADEV = Overlapping ALLAN STD DEV.
 ADEV_Min = ADEV lower bound.
 ADEV_Max = ADEV upper bound.
 MDEV = Modified ALLAN STD DEV.
 TDEV = Time ALLAN STD DEV.
 HDEV = Overlapping HADAMARD STD DEV.

Tau	ADEV	ADEV_Min	ADEV_Max	MDEV	TDEV	HDEV
0.25	0.5657	0.56486	0.56654	0.5657	0.081652	0.56546
0.5	0.40046	0.39981	0.4011	0.31651	0.091368	0.40063
1	0.28263	0.28205	0.28322	0.2059	0.11888	0.28263
2	0.19993	0.19937	0.2005	0.1425	0.16455	0.19991
4	0.1412	0.14064	0.14176	0.099882	0.23067	0.14129
8	0.099775	0.099219	0.10034	0.070693	0.32652	0.099629
16	0.07079	0.070234	0.071359	0.050007	0.46195	0.070797
32	0.050066	0.049513	0.050638	0.035468	0.65527	0.050024
64	0.035386	0.034837	0.035962	0.024988	0.9233	0.035373
128	0.02516	0.024612	0.025745	0.01784	1.3184	0.025121
256	0.018424	0.017864	0.01904	0.01369	2.0234	0.017761
512	0.014887	0.014258	0.015607	0.011087	3.2775	0.014441
1024	0.012116	0.011408	0.012973	0.0096322	5.6946	0.010479
2048	0.014053	0.012928	0.015536	0.012516	14.799	0.010024
4096	0.016146	0.014385	0.018767	0.0089916	21.264	0.01285
8192	0.010248	0.0087362	0.012968	0.008838	41.801	0.0081467
16384	0.012181	0.0097619	0.018257	0.0076047	71.936	0.0073863

AlaVar 5.2 Allan STD DEV eC111



Produced by AlaVar 5.2

Figure 3 : Allan Standard Deviation