

# AlaVar generated report

D:\e\_callisto\Data>TotalLightCurve130.prn

File 'D:\e\_callisto\Data>TotalLightCurve130.prn' created on 16.07.2009 14:33:50

Column # 1 was processed

Data length N = 64735 points.

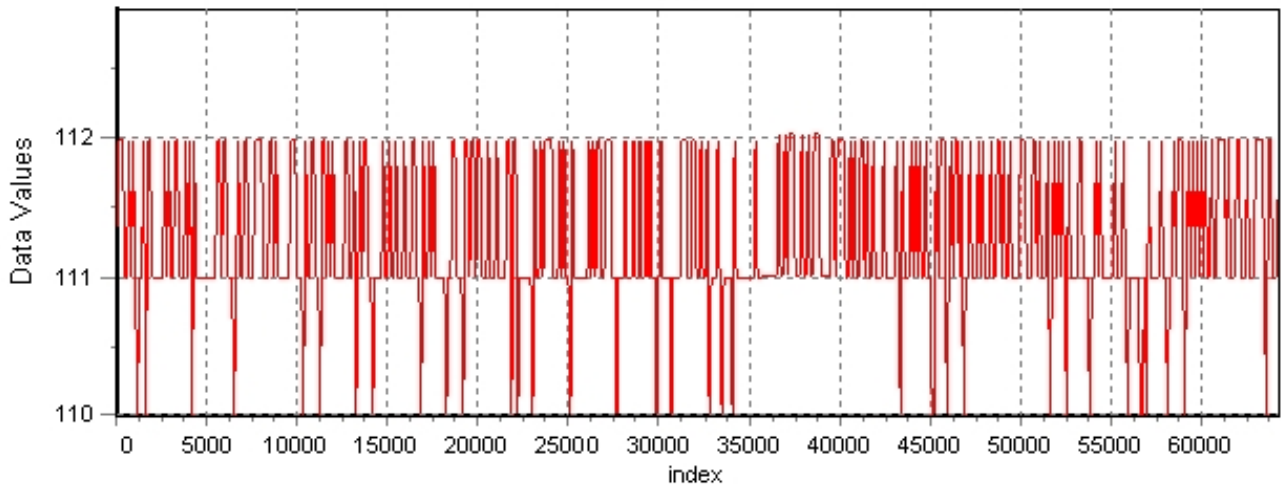
The mean Value of the processed data = 111.267

The Stanadrd Deviation of the processed data = 0.561894

The number of removed outliers is 383

## AlaVar 5.2

### Data Values

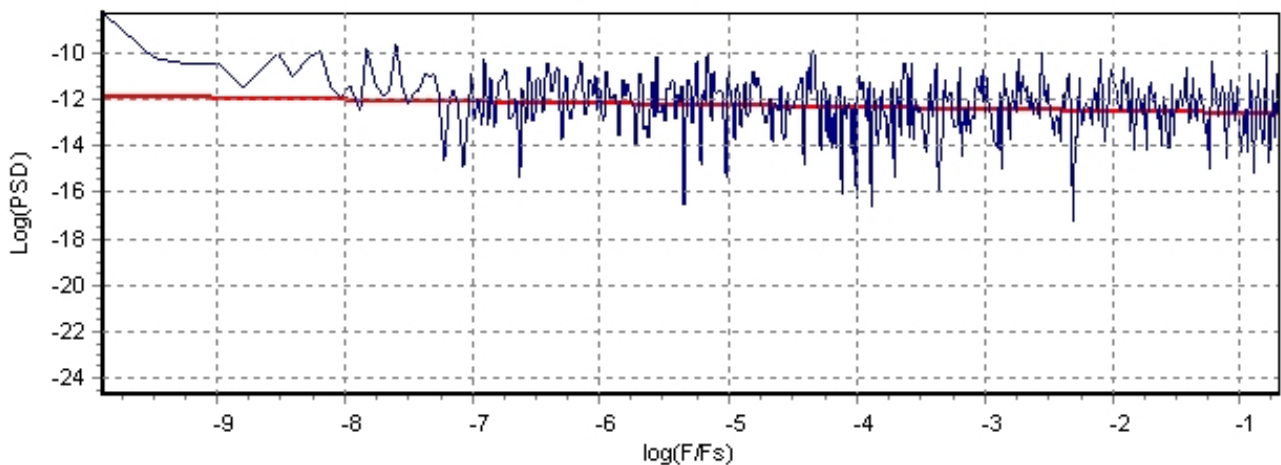


*Produced by AlaVar 5.2*

Figure 1 : Processed Data

## AlaVar 5.2

### PSD of Data



*Produced by AlaVar 5.2*

Figure 2 : Data PSD

The computation of the 3 ALLAN STD DEVS lasted 0.181000 seconds  
 The error bars were computed for a : White FM  
 The computation of the Error bars lasted 0 seconds

ADEV(tau) was fitted to a line :  
 The Solpe of the line is =-0.5  
 The fit result is ADEV(tau=1) = Stability =0.283569

Tau = average Time  
 ADEV = Overlapping ALLAN STD DEV.  
 ADEV\_Min = ADEV lower bound.  
 ADEV\_Max = ADEV upper bound.  
 MDEV = Modified ALLAN STD DEV.  
 TDEV = Time ALLAN STD DEV.  
 HDEV = Overlapping HADAMARD STD DEV.

Tau	ADEV	ADEV_Min	ADEV_Max	MDEV	TDEV	HDEV
0.25	0.54298	0.54114	0.54485	0.54298	0.078373	0.54273
0.5	0.38595	0.38453	0.38738	0.30593	0.088314	0.38541
1	0.27439	0.2731	0.27569	0.20025	0.11562	0.27469
2	0.19283	0.19158	0.19409	0.13712	0.15834	0.1928
4	0.1365	0.13527	0.13776	0.097015	0.22405	0.13592
8	0.098326	0.097082	0.099619	0.069814	0.32246	0.098369
16	0.070371	0.069122	0.07169	0.051086	0.47192	0.068911
32	0.05421	0.052864	0.055664	0.039819	0.73567	0.053206
64	0.040788	0.039376	0.042364	0.029337	1.084	0.041201
128	0.028397	0.027034	0.029991	0.02117	1.5645	0.026913
256	0.024987	0.023333	0.027051	0.019263	2.8471	0.023887
512	0.022056	0.020058	0.0248	0.016871	4.9872	0.019639
1024	0.019772	0.017341	0.023631	0.015307	9.0498	0.017419
2048	0.022155	0.018479	0.029515	0.019367	22.9	0.015289
4096	0.028799	0.022367	0.04891	0.032484	76.818	0.022262

### e-Callisto #01 @ 607.19MHz (after repair)

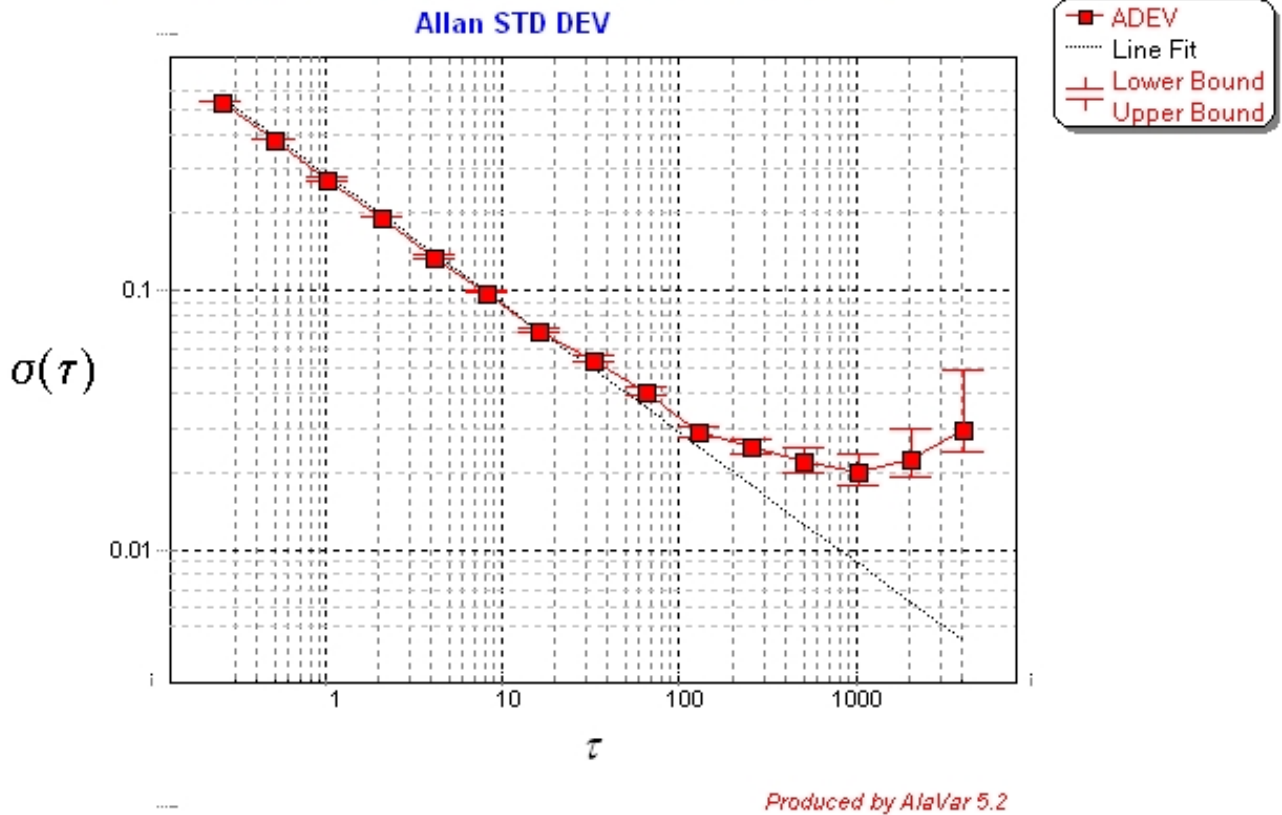


Figure 3 : Allan Standard Deviation