

# AlaVar generated report

C:\CALLISTO-01\FITfiles\TotalLightcurve.DAT

File 'C:\CALLISTO-01\FITfiles\TotalLightcurve.DAT' created on 13.07.2022 15:28:22

Column # 1 was processed

Data length N = 12600 points.

The mean Value of the processed data = 105.123

The Stanardr Deviation of the processed data = 2.54384

The number of removed outliers is 7

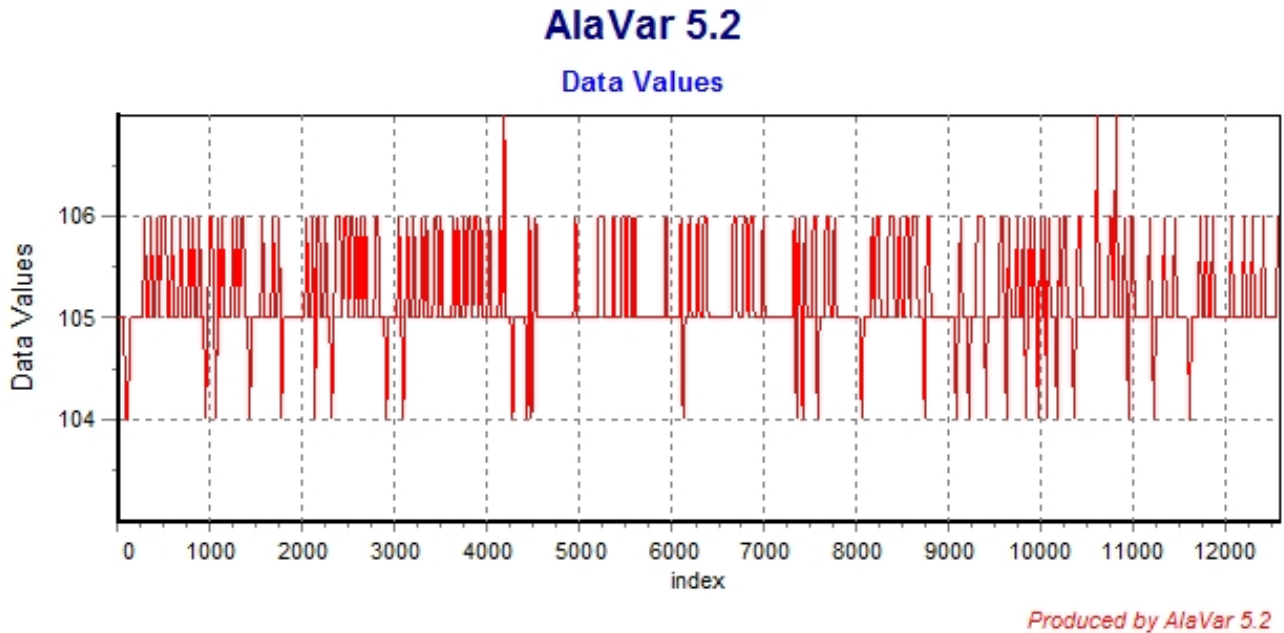


Figure 1 : Processed Data

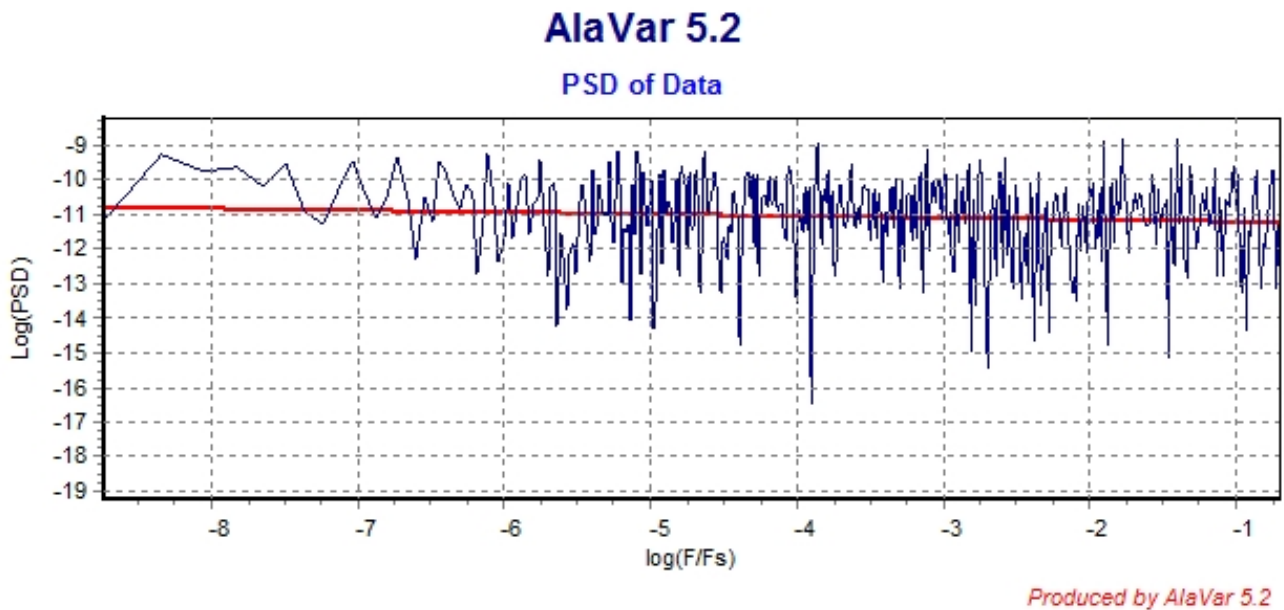


Figure 2 : Data PSD

The computation of the 3 ALLAN STD DEVs lasted 0.122000 seconds  
 The error bars were computed for a : White FM  
 The computation of the Error bars lasted 0 seconds

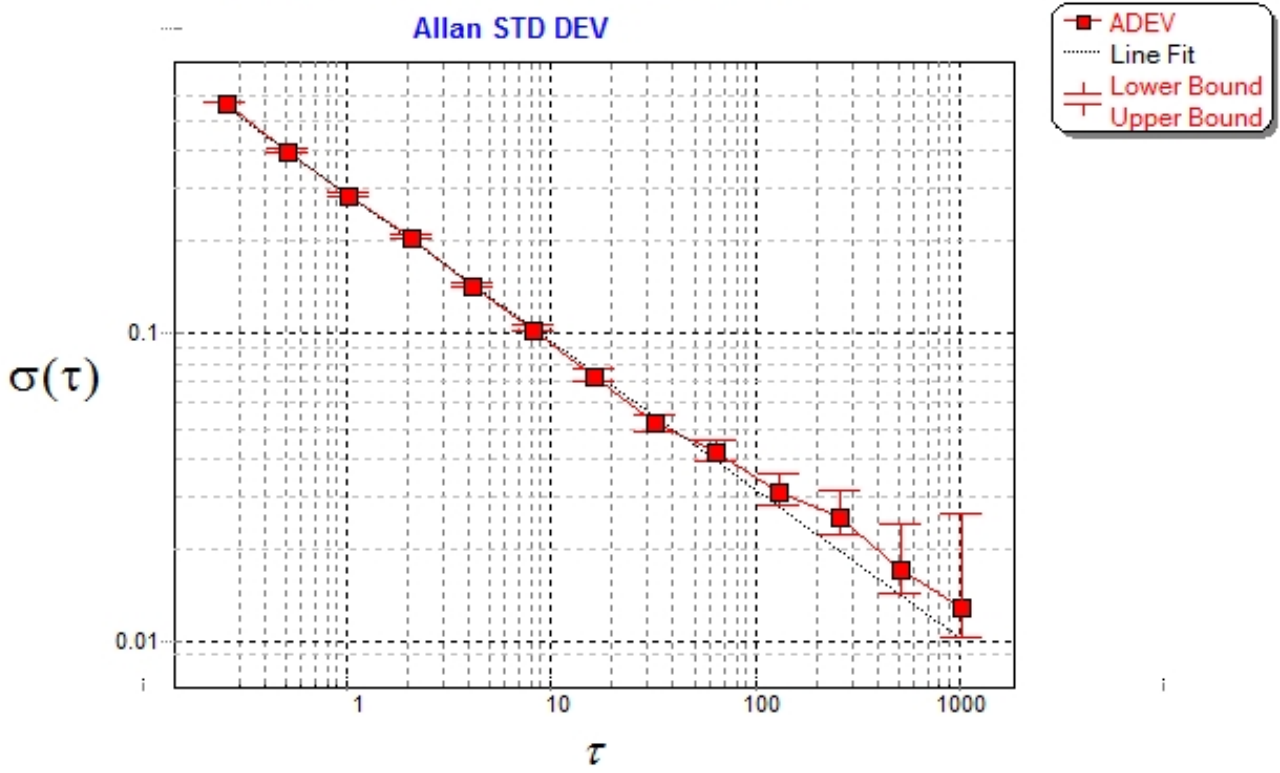
ADEV(tau) was fitted to a line :  
 The Solpe of the line is =-0.48271  
 The fit result is ADEV(tau=1) = Stability =0.286969

Tau = average Time  
 ADEV = Overlapping ALLAN STD DEV.  
 ADEV\_Min = ADEV lower bound.  
 ADEV\_Max = ADEV upper bound.  
 MDEV = Modified ALLAN STD DEV.  
 TDEV = Time ALLAN STD DEV.  
 HDEV = Overlapping HADAMARD STD DEV.

Tau	ADEV	ADEV_Min	ADEV_Max	MDEV	TDEV	HDEV
0.25	0.57131	0.56695	0.57578	0.57131	0.082462	0.57337
0.5	0.40046	0.39716	0.40384	0.31751	0.091658	0.3993
1	0.28768	0.28465	0.29081	0.21173	0.12224	0.28564
2	0.20794	0.20495	0.21107	0.14846	0.17143	0.20872
4	0.14411	0.14122	0.14718	0.10203	0.23563	0.14349
8	0.10324	0.10036	0.1064	0.072695	0.33576	0.10339
16	0.073368	0.070514	0.076598	0.052194	0.48215	0.073767
32	0.051868	0.049076	0.055198	0.038146	0.70476	0.049849
64	0.041274	0.038219	0.045202	0.030211	1.1163	0.040935
128	0.03071	0.027608	0.035162	0.022599	1.6701	0.029844
256	0.025358	0.02189	0.031254	0.018324	2.7083	0.02439
512	0.017072	0.013926	0.024177	0.013958	4.1261	0.01787
1024	0.012785	0.0096142	0.026041	0.0059717	3.5305	0.01457

### CALLISTO eC160, 2022-07-13

Allan STD DEV



Produced by AlaVar 5.2

Figure 3 : Allan Standard Deviation