

AlaVar generated report

C:\CALLISTO-01\FITfiles\TotalLightcurve.DAT

File 'C:\CALLISTO-01\FITfiles\TotalLightcurve.DAT' created on 24.08.2022 12:16:08

Column # 1 was processed

Data length N = 7632 points.

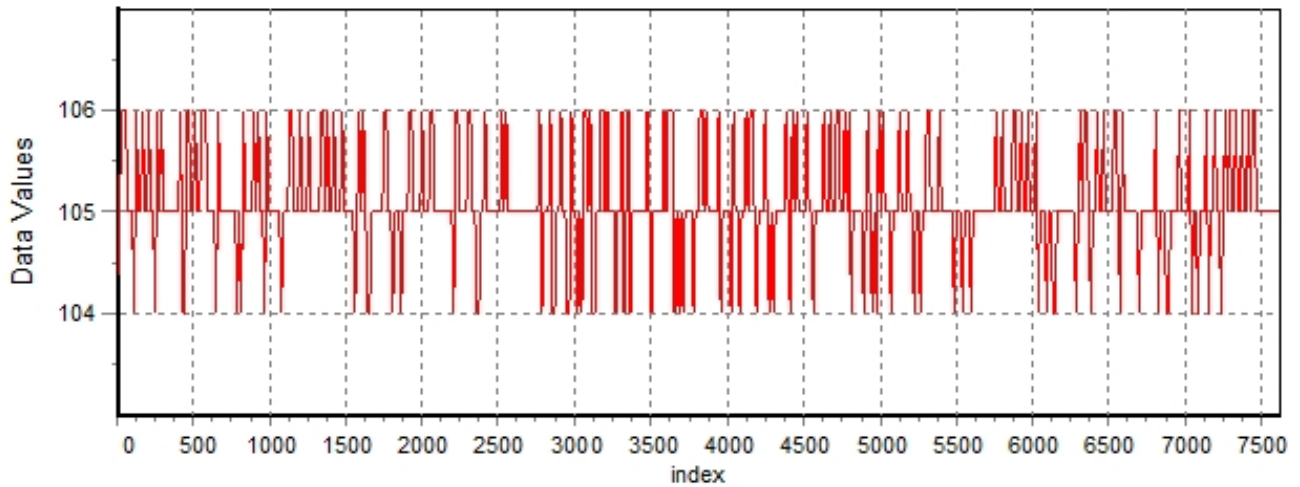
The mean Value of the processed data = 105.027

The Stanardr Deviation of the processed data = 2.74766

The number of removed outliers is 5

AlaVar 5.2

Data Values

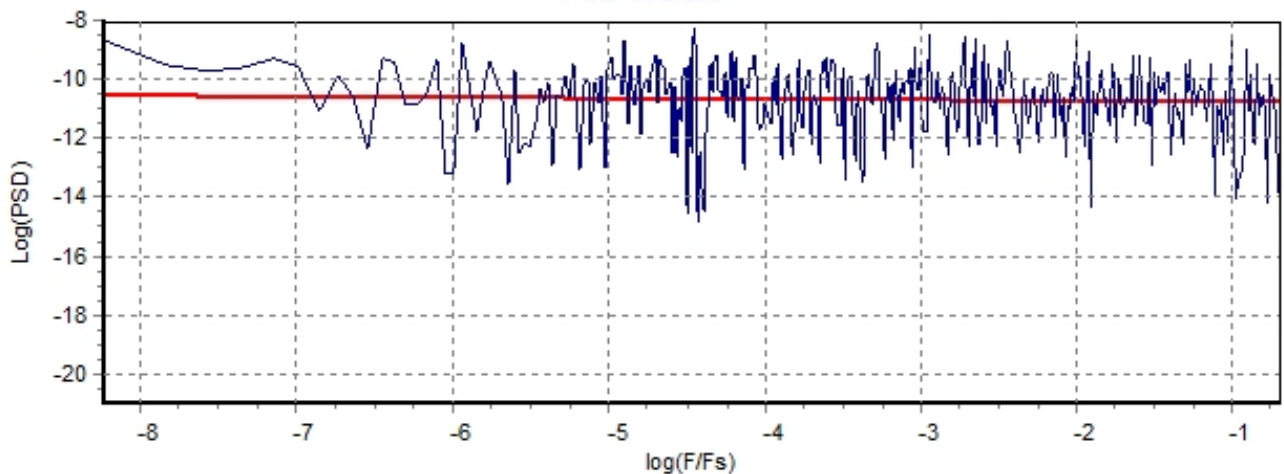


Produced by AlaVar 5.2

Figure 1 : Processed Data

AlaVar 5.2

PSD of Data



Produced by AlaVar 5.2

Figure 2 : Data PSD

The computation of the 3 ALLAN STD DEVs lasted 0.015000 seconds
 The error bars were computed for a : White FM
 The computation of the Error bars lasted 0.001 seconds

ADEV(tau) was fitted to a line :
 The Solpe of the line is =-0.500037
 The fit result is ADEV(tau=1) = Stability =0.282197

Tau = average Time
 ADEV = Overlapping ALLAN STD DEV.
 ADEV_Min = ADEV lower bound.
 ADEV_Max = ADEV upper bound.
 MDEV = Modified ALLAN STD DEV.
 TDEV = Time ALLAN STD DEV.
 HDEV = Overlapping HADAMARD STD DEV.

Tau	ADEV	ADEV_Min	ADEV_Max	MDEV	TDEV	HDEV
0.25	0.56292	0.55741	0.56859	0.56292	0.08125	0.56499
0.5	0.39493	0.39077	0.39923	0.31354	0.09051	0.39378
1	0.28222	0.27842	0.28618	0.20621	0.11905	0.28168
2	0.20067	0.19698	0.20457	0.14248	0.16452	0.20148
4	0.14087	0.13727	0.14476	0.10158	0.2346	0.13859
8	0.10533	0.10158	0.10951	0.074103	0.34226	0.10702
16	0.06742	0.0641	0.071314	0.045373	0.41914	0.068797
32	0.045075	0.042017	0.048914	0.032359	0.59784	0.044292
64	0.033752	0.030621	0.038091	0.023988	0.88638	0.03429
128	0.022557	0.019718	0.027125	0.014832	1.0961	0.022037
256	0.014291	0.011865	0.019265	0.0086105	1.2726	0.0097827
512	0.015626	0.012055	0.0274	0.010275	3.0374	0.012312

CALLISTO eC168, 24.08.2022

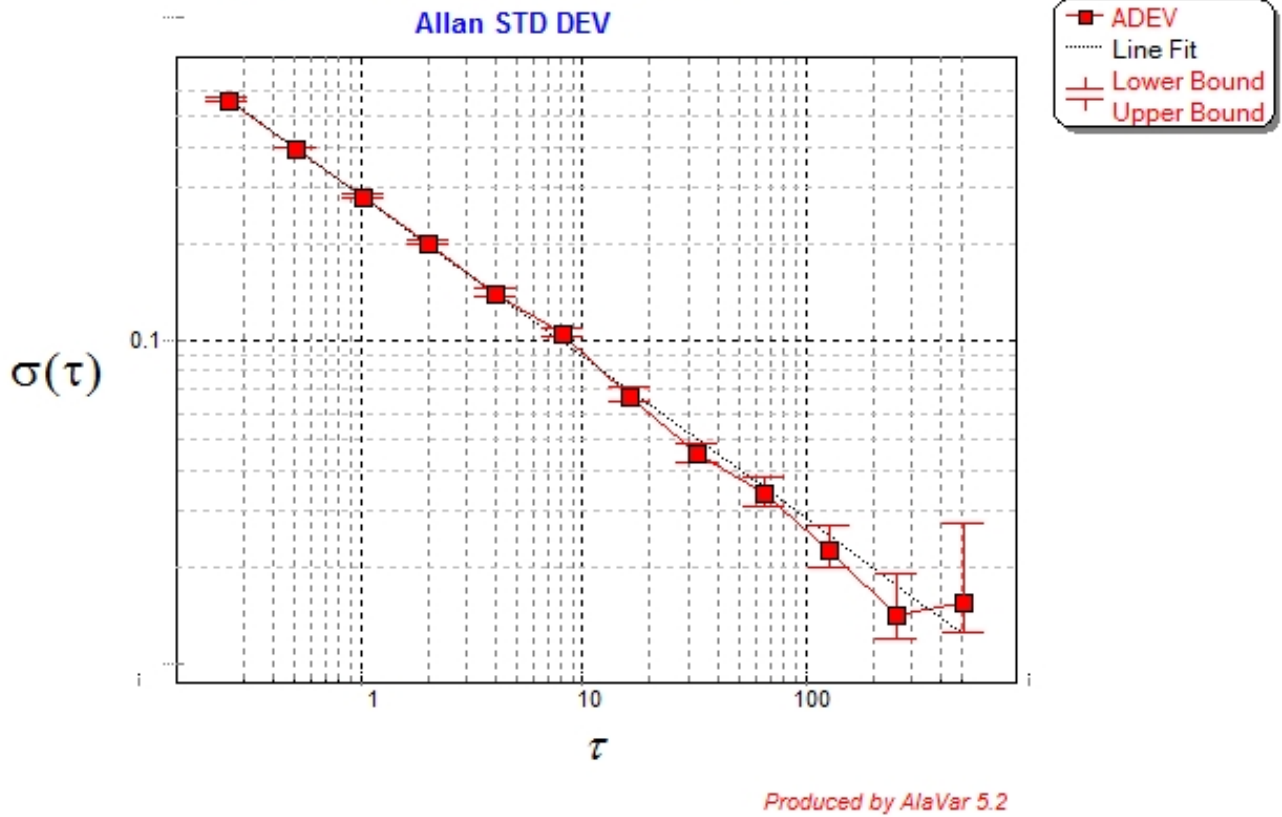


Figure 3 : Allan Standard Deviation