

# AlaVar generated report

C:\CALLISTO-01\FITfiles\TotalLightcurve.DAT

File 'C:\CALLISTO-01\FITfiles\TotalLightcurve.DAT' created on 24.05.2026 20:13:46

Column # 1 was processed

Data length N = 20211 points.

The mean Value of the processed data = 115.533

The Stanadrd Deviation of the processed data = 2.86918

The number of removed outliers is 12

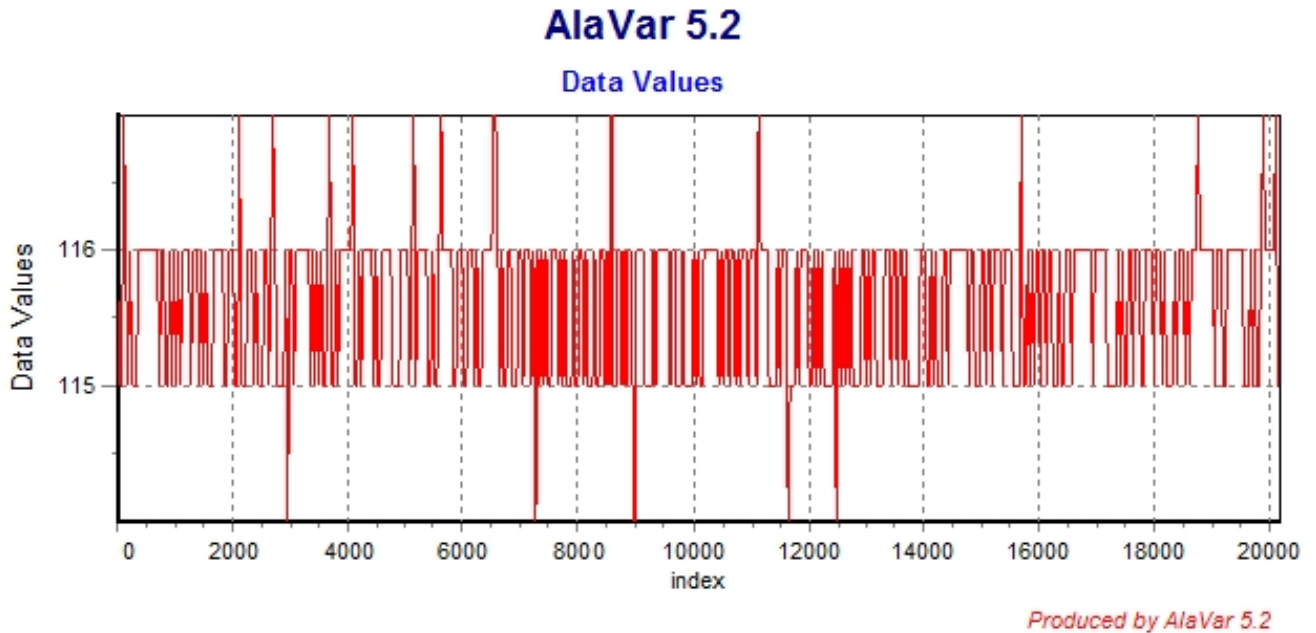


Figure 1 : Processed Data

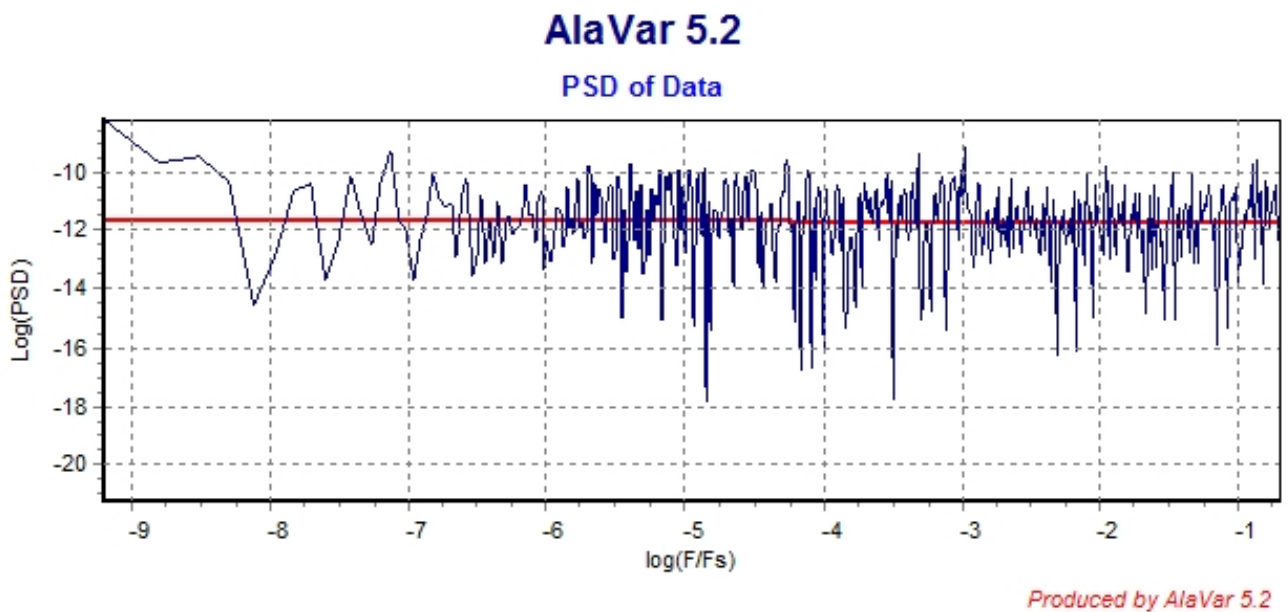


Figure 2 : Data PSD

The computation of the 3 ALLAN STD DEVS lasted 0.115000 seconds  
 The error bars were computed for a : White FM  
 The computation of the Error bars lasted 0 seconds

ADEV(tau) was fitted to a line :  
 The Solpe of the line is =-0.501002  
 The fit result is ADEV(tau=1) = Stability =0.279882

Tau = average Time  
 ADEV = Overlapping ALLAN STD DEV.  
 ADEV\_Min = ADEV lower bound.  
 ADEV\_Max = ADEV upper bound.  
 MDEV = Modified ALLAN STD DEV.  
 TDEV = Time ALLAN STD DEV.  
 HDEV = Overlapping HADAMARD STD DEV.

Tau	ADEV	ADEV_Min	ADEV_Max	MDEV	TDEV	HDEV
0.25	0.5611	0.55771	0.56455	0.5611	0.080988	0.56212
0.5	0.3925	0.38994	0.39511	0.3096	0.089374	0.3924
1	0.27825	0.27593	0.28063	0.20308	0.11725	0.2775
2	0.19914	0.19687	0.20149	0.14226	0.16427	0.19909
4	0.14083	0.13859	0.14319	0.10011	0.23121	0.14056
8	0.099414	0.097201	0.10179	0.070157	0.32404	0.09929
16	0.070652	0.068457	0.073072	0.049934	0.46127	0.070975
32	0.048333	0.046247	0.050729	0.033408	0.61722	0.049067
64	0.033777	0.031763	0.036229	0.025022	0.92456	0.032404
128	0.028562	0.026226	0.031658	0.021292	1.5735	0.028677
256	0.021148	0.018794	0.024686	0.016042	2.3711	0.018572
512	0.017468	0.01484	0.022275	0.010271	3.0361	0.014123
1024	0.015133	0.012068	0.023079	0.011519	6.81	0.0099196

### CALLISTO eC215, 2026-05-24

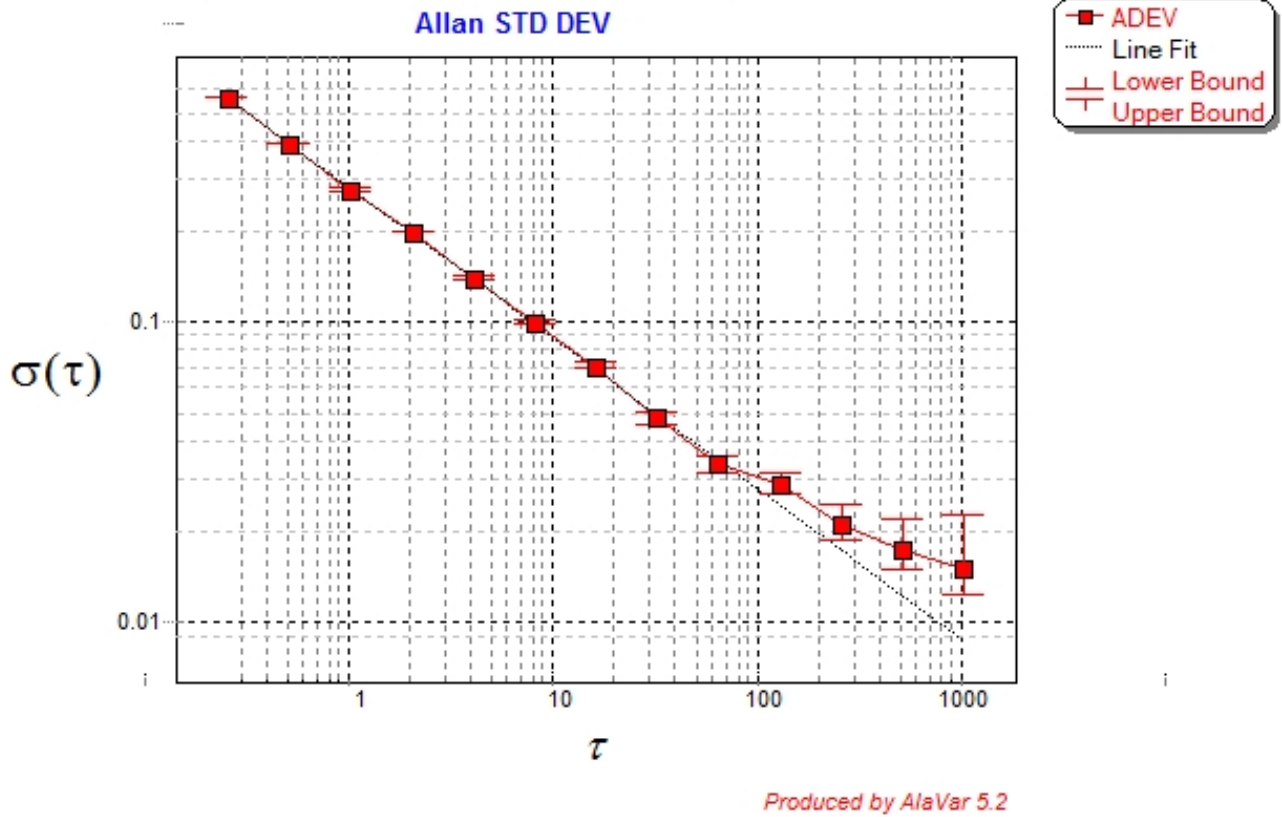


Figure 3 : Allan Standard Deviation