

# AlaVar generated report

C:\CALLISTO-01\FITfiles\TotalLightCurve100.prn

File 'C:\CALLISTO-01\FITfiles\TotalLightCurve100.prn' created on 04.03.2020 04:24:36

Column # 1 was processed

Data length N = 20700 points.

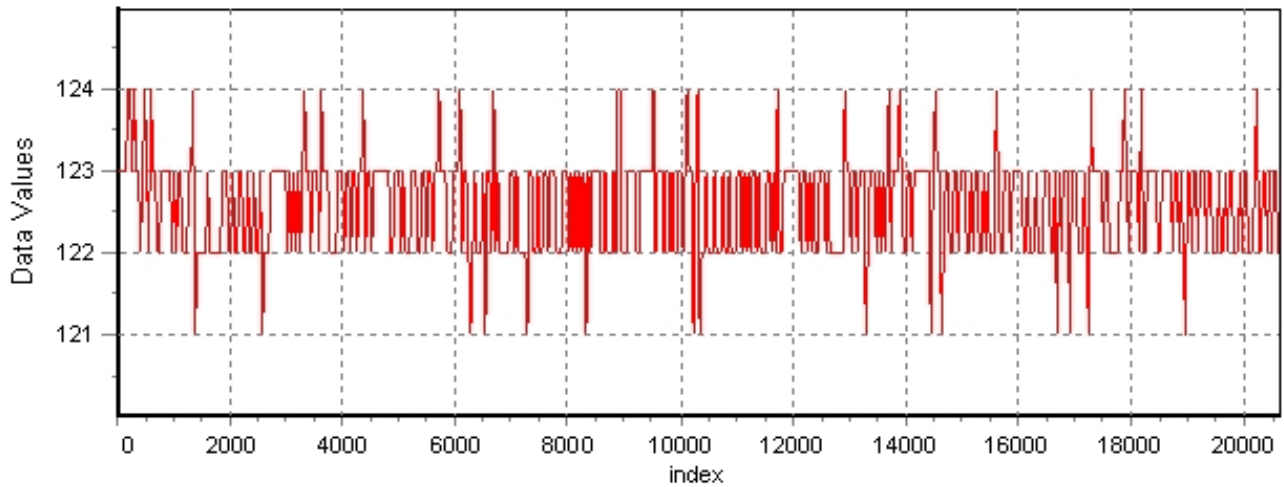
The mean Value of the processed data = 122.329

The Stanadrd Deviation of the processed data = 5.80728

The number of removed outliers is 46

## AlaVar 5.2

### Data Values

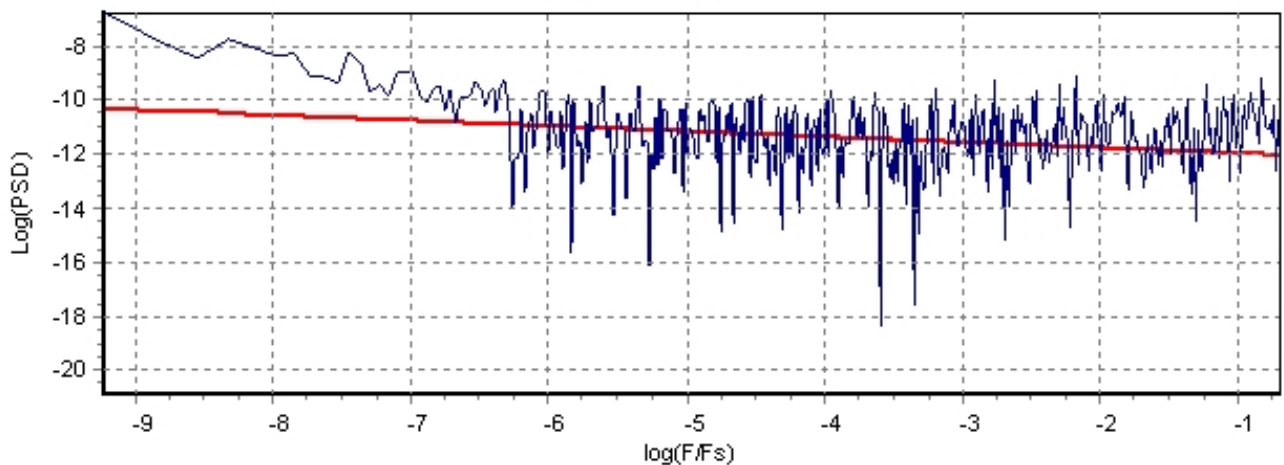


*Produced by AlaVar 5.2*

Figure 1 : Processed Data

## AlaVar 5.2

### PSD of Data



*Produced by AlaVar 5.2*

Figure 2 : Data PSD

The computation of the 3 ALLAN STD DEVs lasted 0.141000 seconds  
 The error bars were computed for a : White FM  
 The computation of the Error bars lasted 0 seconds

ADEV(tau) was fitted to a line :  
 The Solpe of the line is =-0.493988  
 The fit result is ADEV(tau=1) = Stability =0.308039

Tau = average Time  
 ADEV = Overlapping ALLAN STD DEV.  
 ADEV\_Min = ADEV lower bound.  
 ADEV\_Max = ADEV upper bound.  
 MDEV = Modified ALLAN STD DEV.  
 TDEV = Time ALLAN STD DEV.  
 HDEV = Overlapping HADAMARD STD DEV.

Tau	ADEV	ADEV_Min	ADEV_Max	MDEV	TDEV	HDEV
0.25	0.62768	0.62393	0.6315	0.62768	0.090598	0.62975
0.5	0.43574	0.43293	0.43861	0.34278	0.098953	0.43666
1	0.30495	0.30244	0.30753	0.22053	0.12732	0.30561
2	0.21449	0.21207	0.217	0.15259	0.17619	0.21469
4	0.15218	0.14979	0.1547	0.10814	0.24973	0.15243
8	0.1079	0.10552	0.11044	0.077657	0.35868	0.10644
16	0.079704	0.077254	0.082402	0.056441	0.52138	0.079747
32	0.056874	0.054445	0.05966	0.040681	0.75159	0.054074
64	0.044772	0.042129	0.047982	0.031404	1.1604	0.039126
128	0.038958	0.035804	0.043126	0.027042	1.9984	0.028929
256	0.033931	0.03019	0.039524	0.017637	2.6068	0.023664
512	0.0236	0.020084	0.029982	0.01535	4.5375	0.016165
1024	0.027441	0.021936	0.041494	0.022085	13.057	0.022162

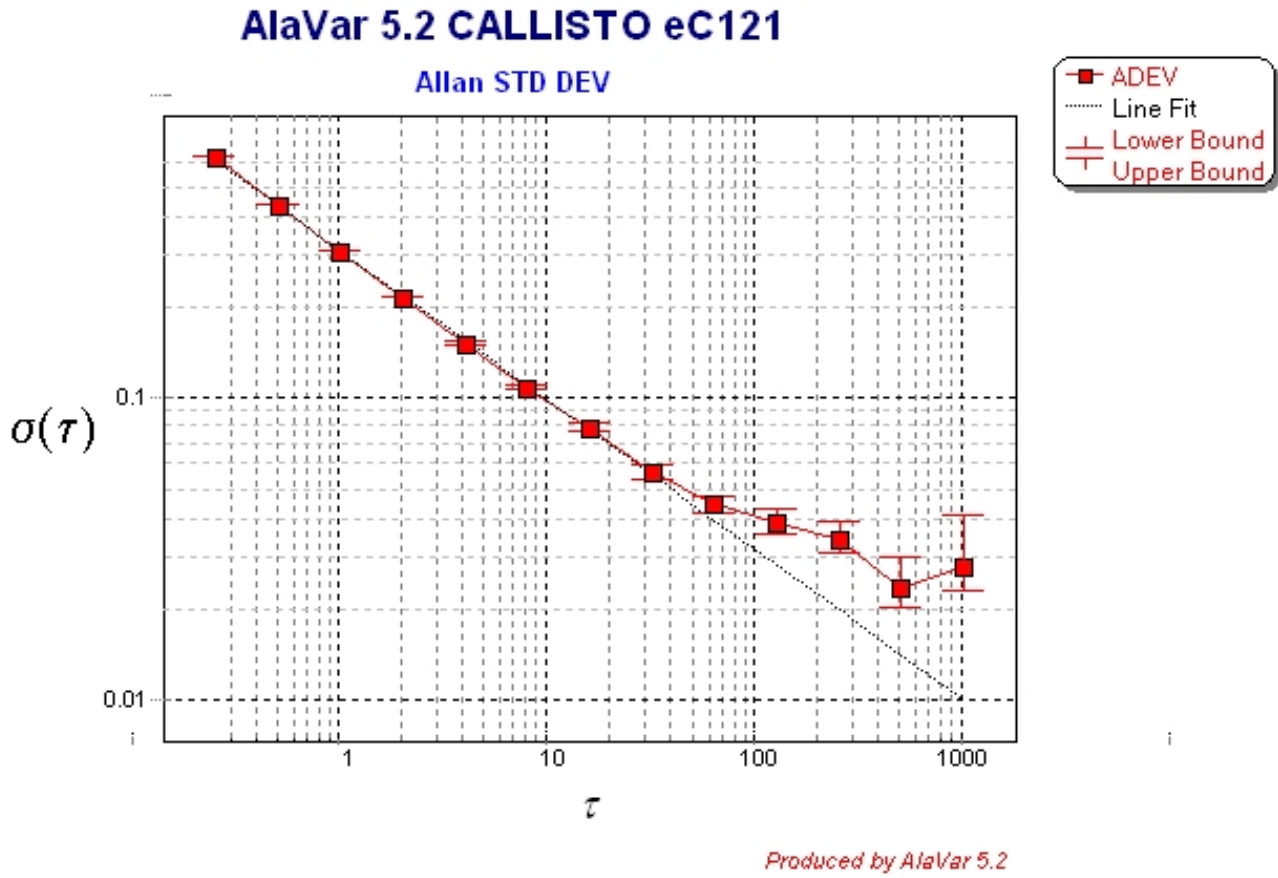


Figure 3 : Allan Standard Deviation