

# AlaVar generated report

C:\CALLISTO-01\FITfiles\TotalLightCurve100.prn

File 'C:\CALLISTO-01\FITfiles\TotalLightCurve100.prn' created on 19.06.2020 18:24:36

Column # 1 was processed

Data length N = 23400 points.

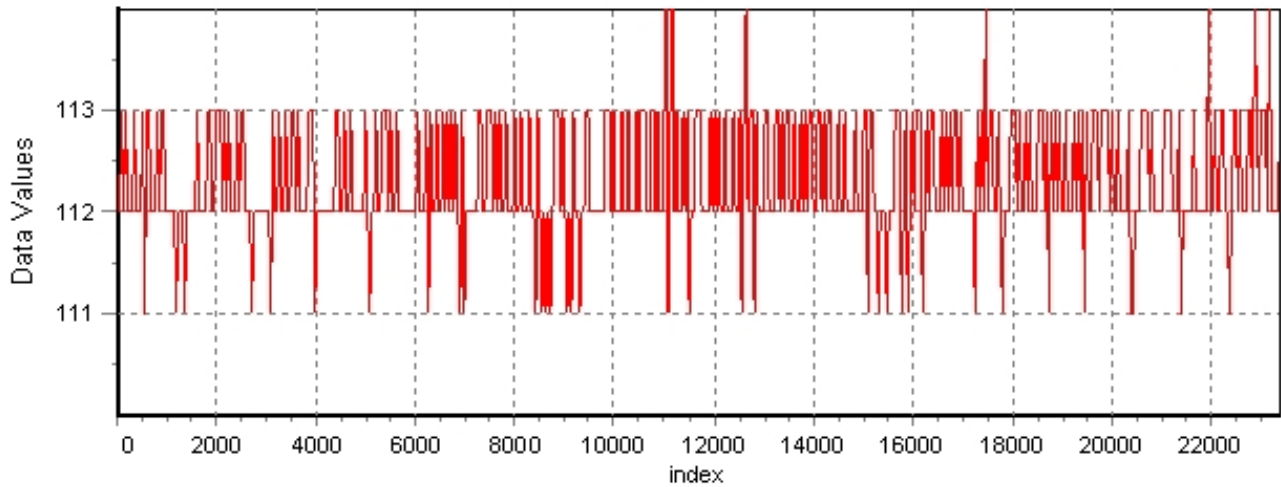
The mean Value of the processed data = 112.222

The Stanardr Deviation of the processed data = 2.71203

The number of removed outliers is 13

## AlaVar 5.2

### Data Values

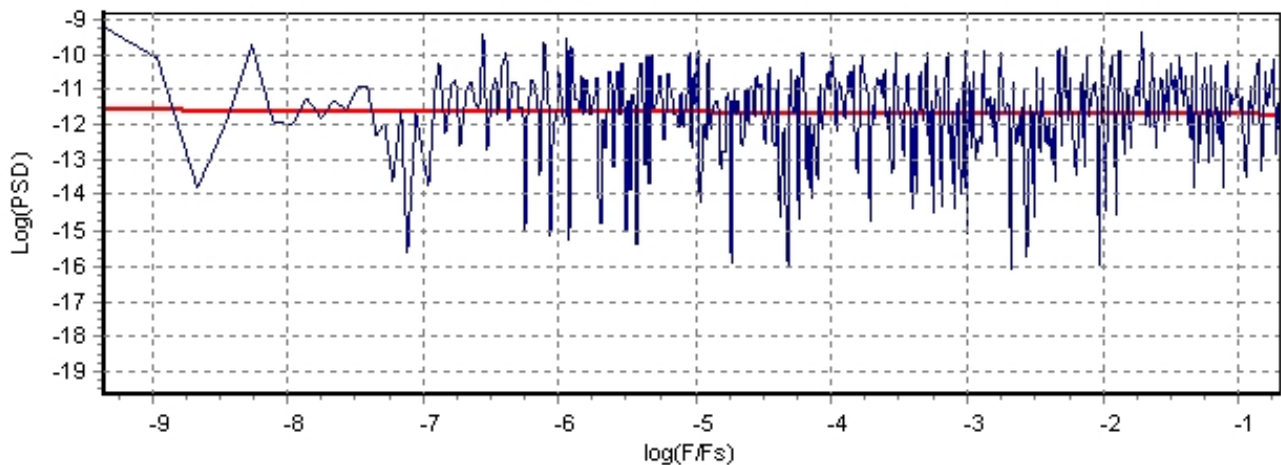


*Produced by AlaVar 5.2*

Figure 1 : Processed Data

## AlaVar 5.2

### PSD of Data



*Produced by AlaVar 5.2*

Figure 2 : Data PSD

The computation of the 3 ALLAN STD DEVs lasted 0.130000 seconds  
 The error bars were computed for a : White FM  
 The computation of the Error bars lasted 0 seconds

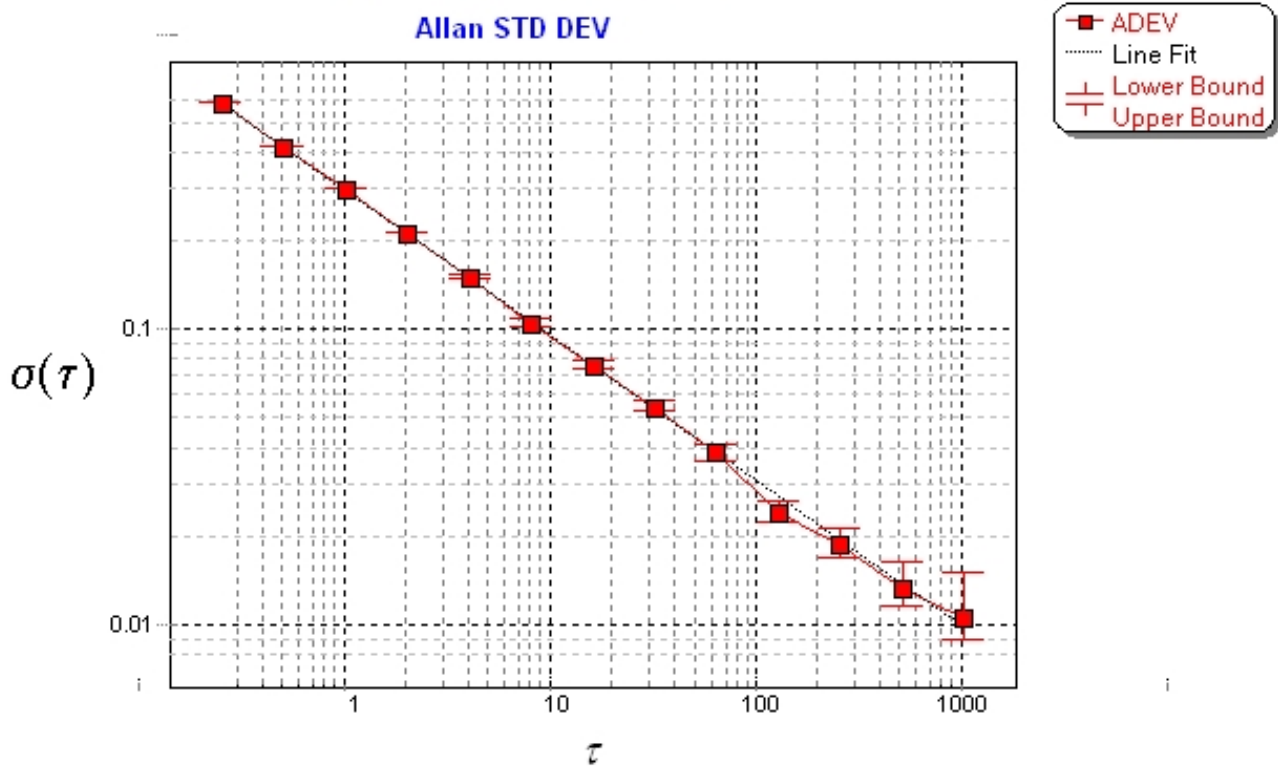
ADEV(tau) was fitted to a line :  
 The Slope of the line is =-0.493897  
 The fit result is ADEV(tau=1) = Stability =0.299215

Tau = average Time  
 ADEV = Overlapping ALLAN STD DEV.  
 ADEV\_Min = ADEV lower bound.  
 ADEV\_Max = ADEV upper bound.  
 MDEV = Modified ALLAN STD DEV.  
 TDEV = Time ALLAN STD DEV.  
 HDEV = Overlapping HADAMARD STD DEV.

Tau	ADEV	ADEV_Min	ADEV_Max	MDEV	TDEV	HDEV
0.25	0.59153	0.58821	0.59491	0.59153	0.08538	0.59071
0.5	0.42103	0.41847	0.42363	0.33352	0.09628	0.41998
1	0.30054	0.29821	0.30293	0.21959	0.12678	0.30048
2	0.21311	0.21084	0.21544	0.15232	0.17588	0.21292
4	0.15164	0.14939	0.15399	0.10798	0.24938	0.15172
8	0.10631	0.1041	0.10866	0.074925	0.34607	0.10607
16	0.075567	0.073379	0.077963	0.053348	0.49281	0.075362
32	0.054354	0.052164	0.056844	0.038832	0.71744	0.054001
64	0.038858	0.036693	0.041457	0.027246	1.0068	0.039374
128	0.023938	0.022106	0.026317	0.016006	1.1829	0.023652
256	0.018594	0.016654	0.021421	0.01275	1.8844	0.017661
512	0.013216	0.011349	0.016463	0.0099263	2.9342	0.01371
1024	0.010464	0.0084738	0.015156	0.0087334	5.1633	0.0081019

### Alan Variance eC126

Allan STD DEV



Produced by AlaVar 5.2

Figure 3 : Allan Standard Deviation