

# AlaVar generated report

C:\Data\clec72.dat

File 'C:\Data\clec72.dat' created on 22.05.2013 08:57:16

Column # 1 was processed

Data length N = 8053 points.

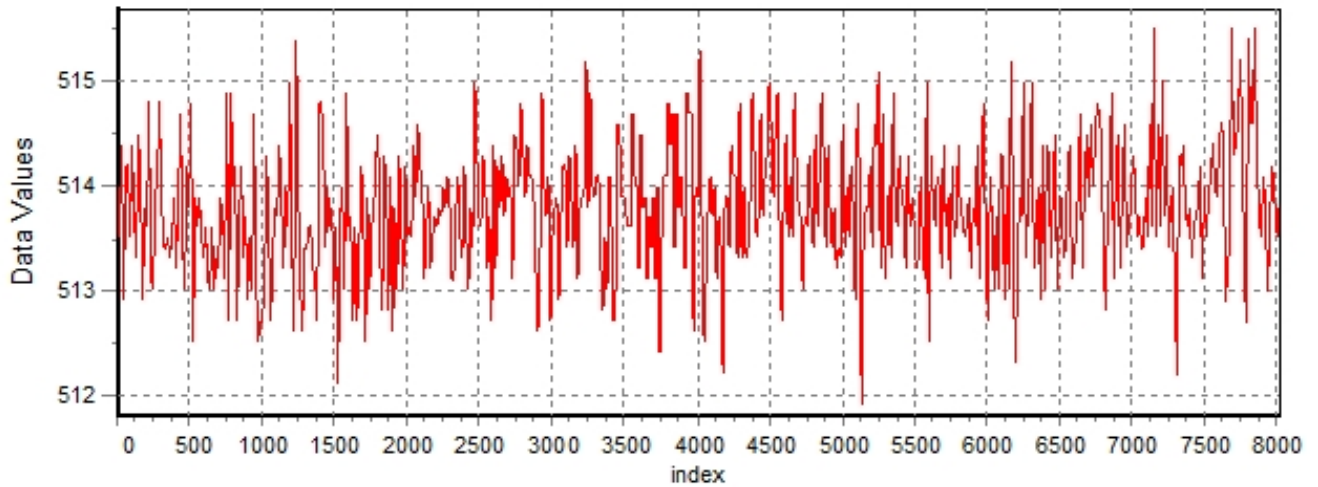
The mean Value of the processed data = 513.761

The Stanardd Deviation of the processed data = 0.659899

The number of removed outliers is 27

## AlaVar 5.2

### Data Values

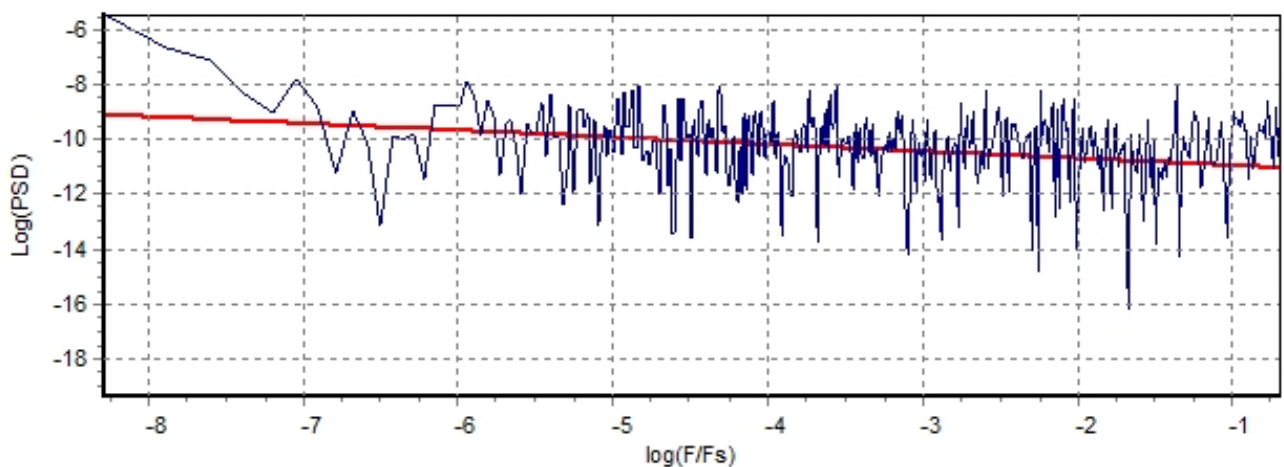


*Produced by AlaVar 5.2*

Figure 1 : Processed Data

## AlaVar 5.2

### PSD of Data



*Produced by AlaVar 5.2*

Figure 2 : Data PSD

The computation of the 3 ALLAN STD DEVs lasted 0.016000 seconds  
 The error bars were computed for a : White FM  
 The computation of the Error bars lasted 0.001 seconds

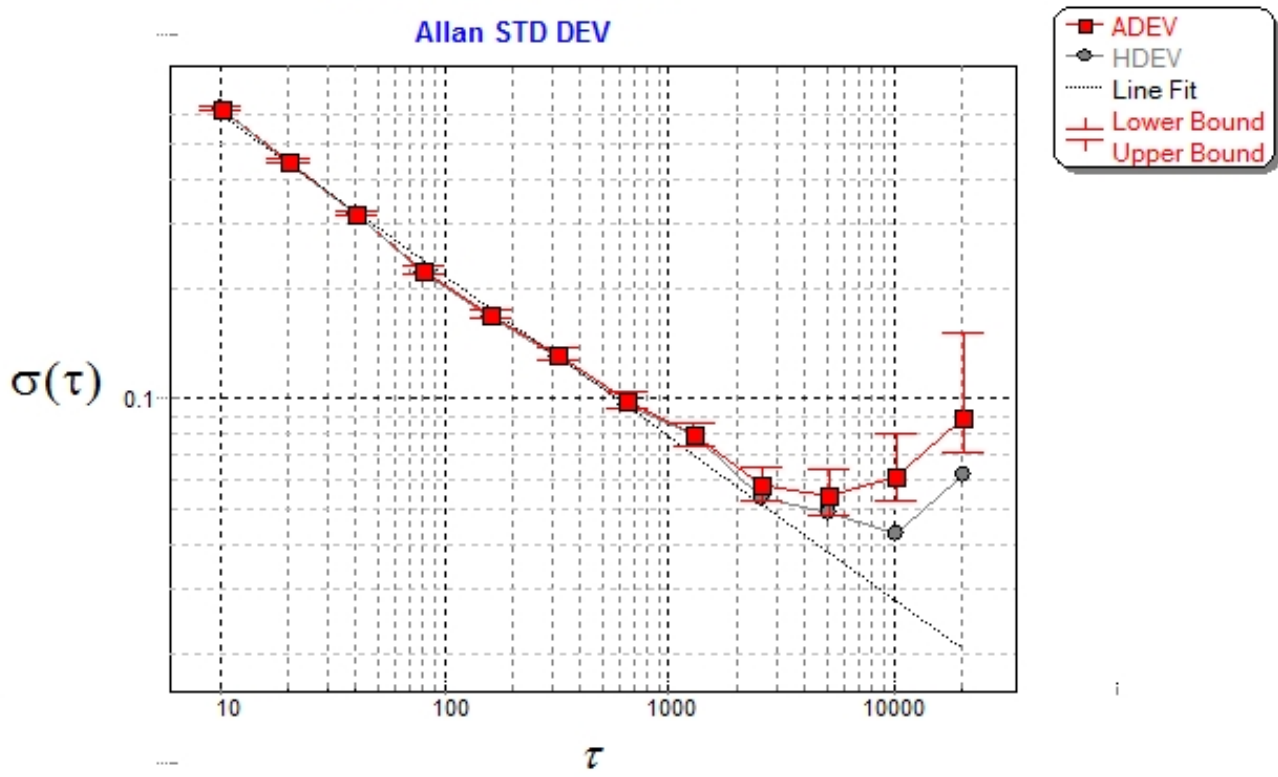
ADEV(tau) was fitted to a line :  
 The Solpe of the line is =-0.442674  
 The fit result is ADEV(tau=1) = Stability =1.6669

Tau = average Time  
 ADEV = Overlapping ALLAN STD DEV.  
 ADEV\_Min = ADEV lower bound.  
 ADEV\_Max = ADEV upper bound.  
 MDEV = Modified ALLAN STD DEV.  
 TDEV = Time ALLAN STD DEV.  
 HDEV = Overlapping HADAMARD STD DEV.

Tau	ADEV	ADEV_Min	ADEV_Max	MDEV	TDEV	HDEV
10	0.62678	0.62081	0.63293	0.62678	3.6187	0.62588
20	0.44695	0.44235	0.45169	0.35493	4.0984	0.44505
40	0.31962	0.31542	0.32398	0.23221	5.3627	0.32059
80	0.22566	0.22161	0.22994	0.16328	7.5417	0.22237
160	0.17054	0.16629	0.17514	0.12528	11.573	0.16721
320	0.13285	0.12825	0.13799	0.098291	18.159	0.1311
640	0.098983	0.094224	0.10454	0.07332	27.092	0.096406
1280	0.079832	0.074542	0.086435	0.060016	44.352	0.079284
2560	0.058044	0.052781	0.065275	0.042745	63.178	0.053715
5120	0.054238	0.047562	0.064839	0.046275	136.79	0.04877
10240	0.060884	0.050774	0.081149	0.054033	319.45	0.042676
20480	0.089076	0.069164	0.15147	0.076764	907.67	0.061937

### Alan Variance eC72

Allan STD DEV



Produced by AlaVar 5.2

Figure 3 : Allan Standard Deviation