

AlaVar generated report

H:\MyDocs\Callisto\Callisto\Qualitests\leC03\AllanTime\TotalLightcurve.DAT

File 'H:\MyDocs\Callisto\le-Callisto\Qualitests\leC03\AllanTime\TotalLightcurve.DAT' created on 27.10.2006 10:22:40

Column # 1 was processed

Data length N = 9372 points.

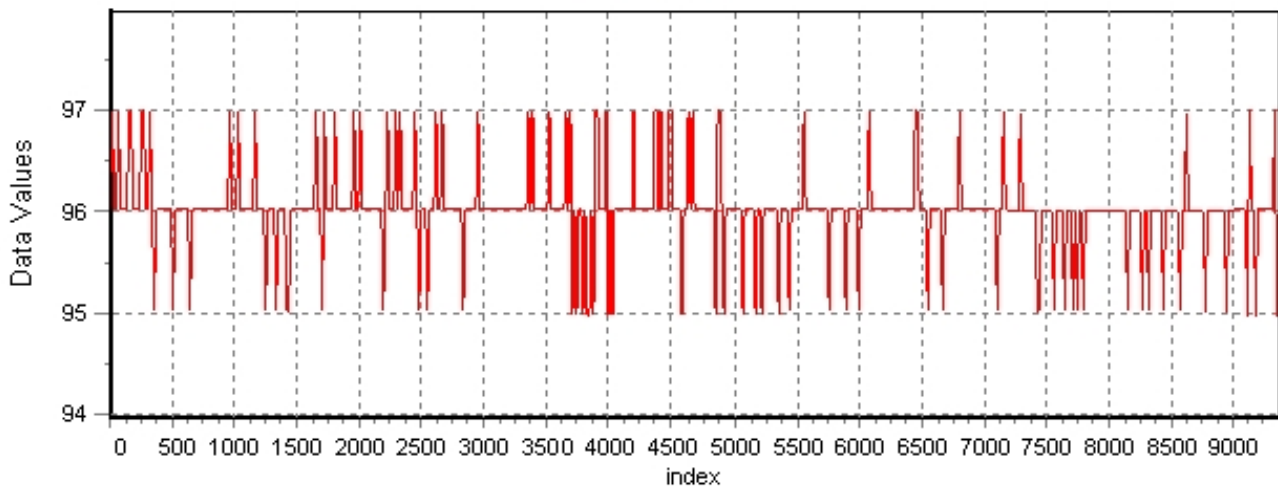
The mean Value of the processed data = 95.9445

The Stanardr Deviation of the processed data = 2.46516

The number of removed outliers is 6

AlaVar 5.2

Data Values

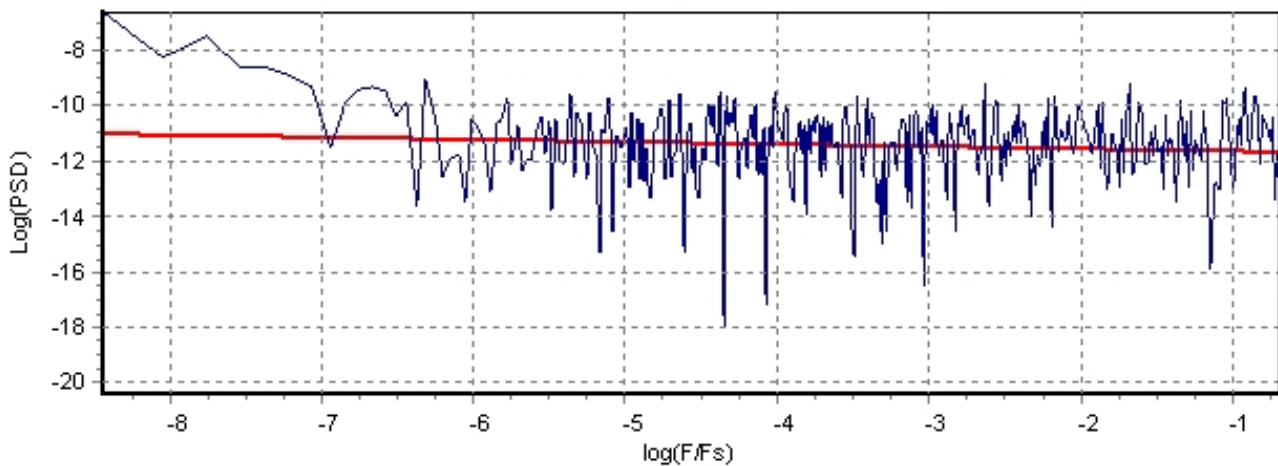


Produced by AlaVar 5.2

Figure 1 : Processed Data

AlaVar 5.2

PSD of Data



Produced by AlaVar 5.2

Figure 2 : Data PSD

The computation of the 3 ALLAN STD DEVS lasted 0.187000 seconds
 The error bars were computed for a : White FM
 The computation of the Error bars lasted 0 seconds

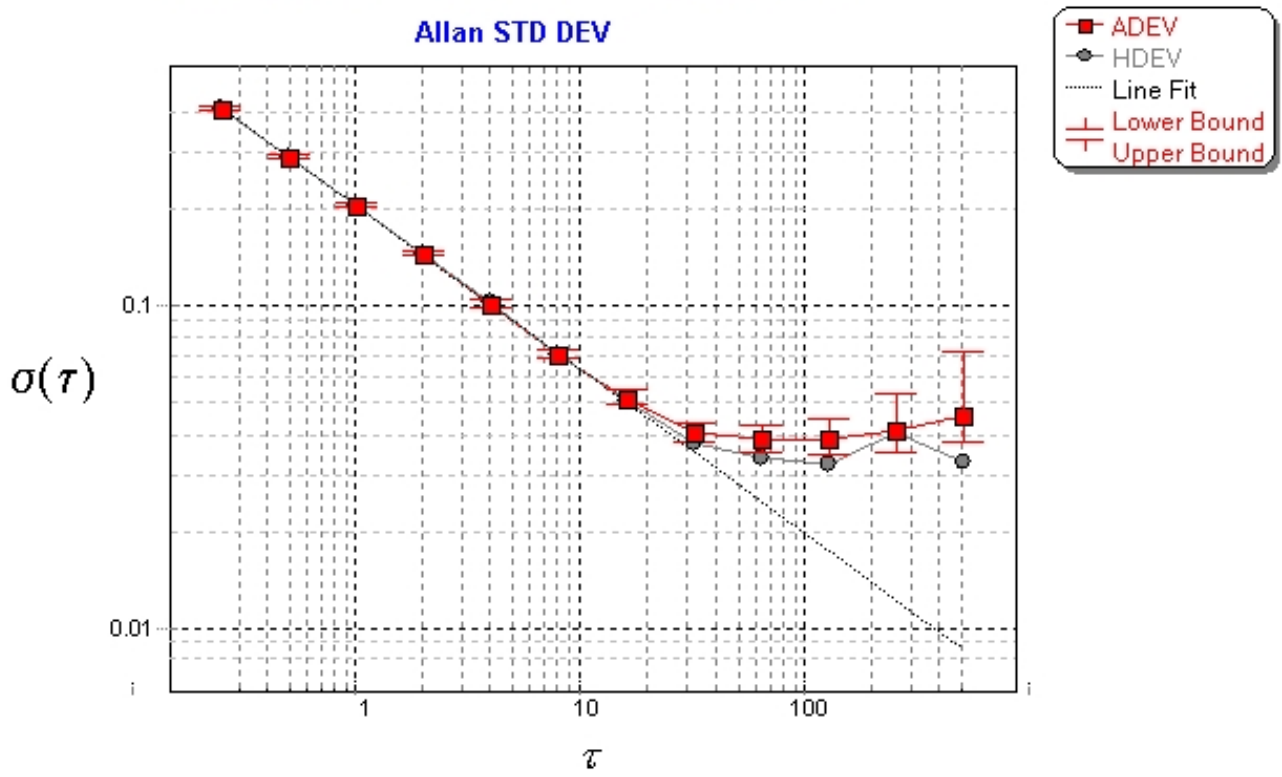
ADEV(tau) was fitted to a line :
 The Solpe of the line is =-0.51044
 The fit result is ADEV(tau=1) = Stability =0.206848

Tau = average Time
 ADEV = Overlapping ALLAN STD DEV.
 ADEV_Min = ADEV lower bound.
 ADEV_Max = ADEV upper bound.
 MDEV = Modified ALLAN STD DEV.
 TDEV = Time ALLAN STD DEV.
 HDEV = Overlapping HADAMARD STD DEV.

Tau	ADEV	ADEV_Min	ADEV_Max	MDEV	TDEV	HDEV
0.25	0.41716	0.41348	0.42095	0.41716	0.060212	0.41682
0.5	0.29465	0.29184	0.29754	0.23243	0.067097	0.29487
1	0.20811	0.20558	0.21074	0.15154	0.087489	0.20859
2	0.14576	0.14334	0.14831	0.10354	0.11956	0.14574
4	0.10243	0.10006	0.10498	0.071682	0.16554	0.10308
8	0.07095	0.068665	0.07348	0.050402	0.2328	0.070585
16	0.051835	0.049517	0.054512	0.037592	0.34726	0.050516
32	0.040843	0.038322	0.043938	0.031046	0.57358	0.03776
64	0.038885	0.035594	0.043295	0.031198	1.1528	0.033746
128	0.038576	0.034137	0.045362	0.03189	2.3567	0.032233
256	0.041358	0.034931	0.05345	0.033859	5.0045	0.040518
512	0.045541	0.036014	0.071662	0.047199	13.952	0.032821

AlaVar 5.2 e-Callisto #03 at 607.19MHz

Allan STD DEV



Produced by AlaVar 5.2

Figure 3 : Allan Standard Deviation